

# AGENCE PALLLEN

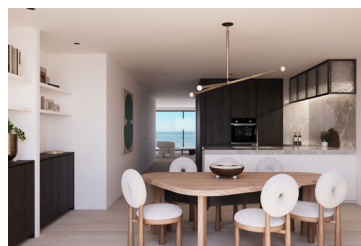
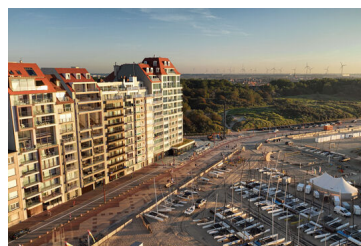
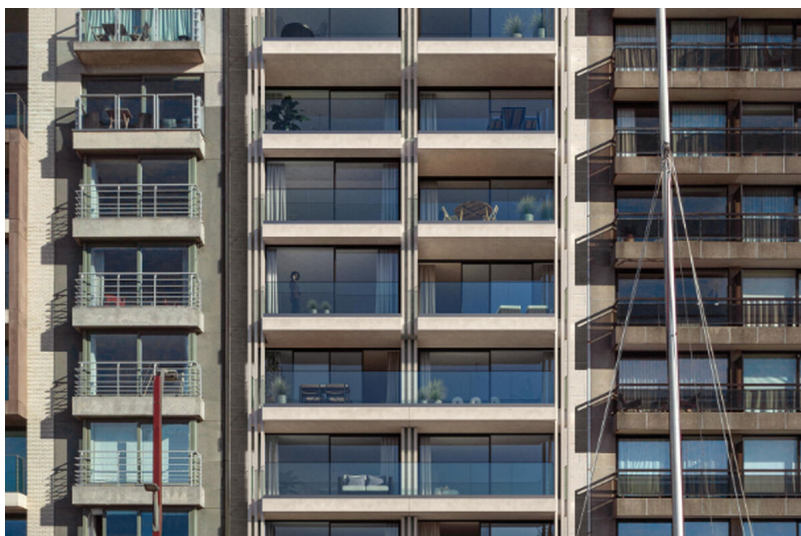
LUXURY REAL ESTATE

## Project "Pierlala": Pierlala North apartment 1.1

108 m<sup>2</sup> | 2 slaapkamers | 2 badkamers

Zeedijk-Duinbergen 308, 8300 Knokke

€ 1.300.000



Sublime new construction apartment with frontal sea view.

Pierlala is a unique new construction residence consisting of 2 apartment blocks with frontal sea view (Pierlala North) or south facing apartments with panoramic views over Duinbergen (Pierlala South).

Layout of the apartment on the first floor in the apartment building Pierlala North:

Entrance hall with cloakroom and guest toilet. Open living space with bright sitting area, dining area and luxurious open kitchen. Adjacent to the living space is the outdoor terrace which offers magnificent sea views. Practical storage room adjoining the kitchen. Master bedroom with ensuite bathroom. Second bedroom. Second bathroom on the nighthall.

The specifications include generous budgets for the finishes of the apartments.

The start of construction is planned for September 2024 and completion is scheduled for spring 2027.

Consultation of the building plans and specifications is possible by appointment at one of our offices.



**Do you have questions or wish to schedule a visit?  
Please contact Didrik!**

050 631 631

DIDRIK@PALLLEN.BE



## Specifics

Bedrooms	2
Bathrooms	2
Habitable surface	108m <sup>2</sup>
Total surface	115m <sup>2</sup>
Construction year	2024
General state	Luxurious finishing touch

## Legal information

Destination	Residential area
Subpoena	No
Pre-purchase right	No
Subdivision application	No
Bouwvergunning	Yes
Protected heritage	No

## Energy

EPC ref.	EPB bij oplevering
Energy	0 kWh/m <sup>2</sup>
Flooding sensitivity	Non-flood zone
P-score	A
G-score	A
Delineated shoreline zone	Not applicable



**Do you have questions or wish to schedule a visit?  
Please contact Didrik!**

050 631 631

DIDRIK@PALLEN.BE

