

AGENCE PALLEN

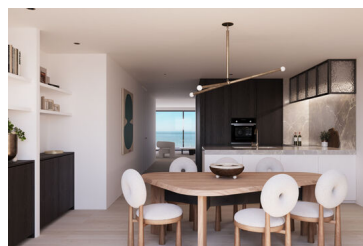
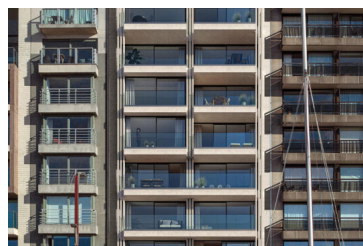
LUXURY REAL ESTATE

Project "Pierlala": Pierlala North apartment 6.2

79 m² | 2 slaapkamers | 1 badkamer

Zeedijk-Duinbergen 308, 8300 Knokke

€ 1.095.000



Sublime new construction apartment with frontal sea view.

Pierlala is a unique new construction residence consisting of 2 apartment blocks with frontal sea view (Pierlala North) or south facing apartments with panoramic views over Duinbergen (Pierlala South).

Layout of the apartment on the sixth floor in the apartment building Pierlala North:

Entrance hall with checkroom and guest toilet. Spacious living space with bright lounge, dining area and luxurious open kitchen. Adjacent to the living space is the outdoor terrace with magnificent sea views. Practical storage room. Master bedroom. Second bedroom. Bathroom.

The specifications include generous budgets for the finishes of the apartments.

The start of construction is planned for September 2024 and completion is scheduled for spring 2027.

Consultation of the building plans and specifications is possible by appointment at one of our offices.



**Do you have questions or wish to schedule a visit?
Please contact Didrik!**

050 631 631

DIDRIK@PALLLEN.BE



Specifics

Bedrooms	2
Bathrooms	1
Habitable surface	79m ²
Total surface	85m ²
Construction year	2024
General state	Luxurious finishing touch

Legal information

Destination	Residential area
Subpoena	No
Pre-purchase right	No
Subdivision application	No
Bouwvergunning	Yes
Protected heritage	No

Energy

EPC ref.	EPB bij oplevering
Energy	0 kWh/m ²
Flooding sensitivity	Non-flood zone
P-score	A
G-score	A
Delineated shoreline zone	Not applicable



Do you have questions or wish to schedule a visit?
Please contact Didrik!

050 631 631

DIDRIK@PALLEN.BE

