

AGENCE PALLLEN

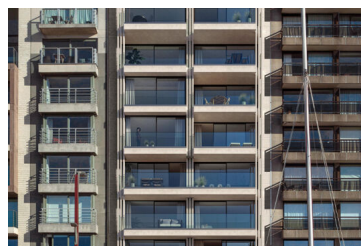
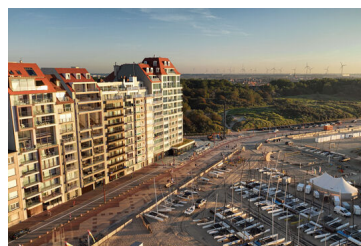
LUXURY REAL ESTATE

Project "Pierlala": Pierlala North duplex 10.1

144 m² | 2 slaapkamers | 2 badkamers

Zeedijk-Duinbergen 308, 8300 Knokke

€ 1.975.000



Sublime new construction duplex apartment with frontal sea view.

Pierlala is a unique new construction residence consisting of 2 apartment blocks with frontal sea view (Pierlala North) or south facing apartments with panoramic views over Duinbergen (Pierlala South).

Layout of the apartment on the 10th floor in the Pierlala North building:

Entrance hall with cloakroom and guest toilet. Very spacious open living area (façade width of approximately 10m) with a bright sitting area. Adjacent to the living area is the outdoor terrace, offering beautiful sea views.

Practical storage room. Spacious open kitchen with dining area. Second terrace.

Duplex floor: Master bedroom with ensuite bathroom. Second bedroom. Separate toilet and bathroom in the night hall.

The specifications include generous budgets for the finishes of the apartments.

The start of construction is planned for September 2024 and completion is scheduled for spring 2027.

Consultation of the building plans and specifications is possible by appointment at one of our offices.



**Do you have questions or wish to schedule a visit?
Please contact Didrik!**

050 631 631

DIDRIK@PALLLEN.BE



Specifics

Bedrooms	2
Bathrooms	2
Habitable surface	144m ²
Total surface	153m ²
Construction year	2024
General state	Luxurious finishing touch

Legal information

Destination	Residential area
Subpoena	No
Pre-purchase right	No
Subdivision application	No
Bouwvergunning	Yes
Protected heritage	No

Energy

EPC ref.	EPB bij oplevering
Energy	0 kWh/m ²
Flooding sensitivity	Non-flood zone
P-score	A
G-score	A
Delineated shoreline zone	Not applicable



**Do you have questions or wish to schedule a visit?
Please contact Didrik!**

050 631 631

DIDRIK@PALLEN.BE

